

## IMPROVE DATA MANAGEMENT

**ARE YOU LOOKING TO COMPETE AND GROW YOUR COMPANY BY SPEEDING TIME-TO-MARKET, REDUCING COSTS, AND IDENTIFYING THE HIGHEST-VALUE OPPORTUNITIES?**

Microsoft® SQL Server® 2008 R2 can help address these challenges with new capability features in development, manageability, business intelligence (BI), and data warehousing. Microsoft SQL Server 2008 R2 is a complete set of enterprise-ready technologies and tools that help people derive the most value from information at the lowest total-cost-of-ownership. Enjoy high levels of performance, availability, and security; employ more productive management and development tools; and deliver pervasive insight with self-service BI.

Expanding on the value delivered in SQL Server 2008, SQL Server 2008 R2 provides a wealth of new features and capabilities that can benefit your entire organization, including:

### **A TRUSTED, SCALABLE PLATFORM**

#### **Scale your data warehouse from tens to hundreds of terabytes**

SQL Server 2008 R2 offers customers scalability to meet the demands of growing data warehouses. Parallel Data Warehouse is a highly scalable appliance for enterprise data warehousing. It uses massively parallel processing (MPP) to deliver the high performance and scalability on SQL Server 2008, Windows Server 2008, and industry-standard hardware. The MPP architecture helps enable better scalability, more predictable performance, reduced risk, and a lower cost per terabyte than other data warehouse solutions.

#### **Process large volumes of events across multiple data streams**

Data volumes are exploding with event data streaming from sources such as RFID, sensors, and Web logs across industries including manufacturing, financial services, and utilities. The size and frequency of the data make it challenging to store for data mining and analysis.

#### **Deliver trusted data assets across heterogeneous systems**

The increased emphasis on regulatory compliance, SOA, and mergers and acquisitions has made creating and maintaining accurate, high-quality master data a business necessity. IT is challenged with delivering high-quality master data to downstream data warehouse, analytics, and BI systems in consumable formats.

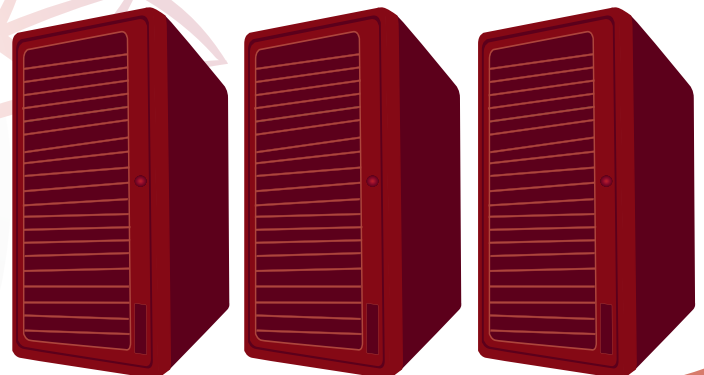
## KEY HIGHLIGHTS

- Complete information platform for applications of all sizes
- Managed, familiar self-service BI tools
- Support for large-scale data centers and data warehouses
- Opportunities to build and extend applications in the cloud
- Integration with the Microsoft Application Platform
- New range of capabilities to derive more value from information

## CONTACT TTI ABOUT IMPLEMENTING OR UPGRADING TO SQL SERVER® 2008 R2



**Microsoft**  
GOLD CERTIFIED  
Partner



219 S. Main Street, Suite 300  
Royal Oak, Michigan, USA 48067

866.TEAM.TTI (866.832.6884)

[info@trilliumteam.com](mailto:info@trilliumteam.com)

[www.trilliumteam.com](http://www.trilliumteam.com) | [microsoft.com/sqlserver/en/us/](http://microsoft.com/sqlserver/en/us/)

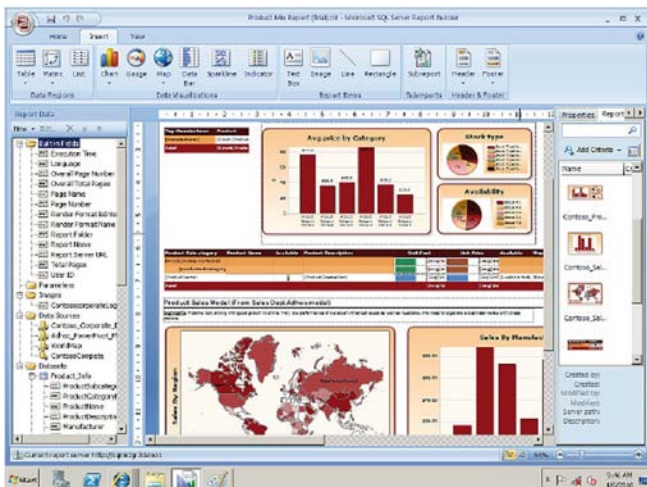
**TEAMOLOGIES:** *n.* the science of teamwork, technology, art, career and skill combined to achieve a practical purpose

## ENABLE MANAGED SELF-SERVICE BI

Empower users with tools they already know and use  
SQL Server 2008 R2 introduces innovative self-service analysis tools that allow end users to quickly create solutions from disparate data sources using powerful extensions to Excel. PowerPivot gives users the power to create compelling self-service BI solutions, facilitates sharing and collaboration on user-generated BI solutions in a SharePoint Server 2010 environment, and enables IT organizations to increase operational efficiencies through SQL Server 2008 R2-based management tools.

## Create new reports within minutes

SQL Server Report Builder provides a productive and intuitive design interface, new visualizations including maps and sparklines, and offers a new “grab and go” experience for creating new reports from existing content. The Report Part Gallery allows users to search for existing report parts and then drag and drop them onto the design surface while retaining all underlying definitions, queries, and so forth.



## TTI DIFFERENCE

Trillium Teamologies, Inc. is a certified Microsoft Gold partner and has implemented SQL Server 2008 solutions for companies of all sizes. Yet, what sets us apart is our premier team of professionals, which is our most valuable asset in developing long-term relationships with our customers and technology partners.

219 S. Main Street, Suite 300  
Royal Oak, Michigan, USA 48067  
866.TEAM.TTI (866.832.6884)  
info@trilliumteam.com  
www.trilliumteam.com | microsoft.com/sqlserver/en/us/

“SQL SERVER 2008 R2 SAVES US MONEY IN MANY WAYS—THROUGH EFFICIENT LICENSING, WITH FEATURES THAT SAVE TIME, AND BY EMPOWERING USERS TO DO MUCH OF THEIR OWN BUSINESS ANALYSIS.”

~ William Velez

VP AND CIO  
PHARMACY INSURANCE CORPORATION OF AMERICA

## IMPROVE IT AND DEVELOPER EFFICIENCY

### Manage applications and instances efficiently at scale

Demand for IT organizations to provide additional value with existing budgets and resources has never been greater. To achieve this, they need tools and capabilities that help them maximize efficiency across the application lifecycle with streamlined management, rapid development, and predictable deployment.

Investments in application and multi-server management will help organizations proactively manage database environments efficiently at scale through centralized visibility into resource utilization. These innovations, along with improved support for virtualization through Hyper-V with Live Migration in Windows Server 2008 R2, help streamline consolidation and upgrade initiatives across the application lifecycle—all with tools that make it fast and easy.

### Accelerate deployments and upgrades

The introduction of a single unit of deployment in SQL Server 2008 R2 enables organizations to accelerate and standardize deployment and upgrade of data-tier application deployment, taking the guesswork out of database projects.

## CONTACT TTI ABOUT IMPLEMENTING OR UPGRADING TO SQL SERVER® 2008 R2



Trillium Teamologies, Inc.(TTI) is an innovative, high integrity technology and creative solutions company that provides technology solutions, projects, services, systems and products. As one of only eight Microsoft Gold managed partners in Michigan, TTI has significant expertise and experience in Microsoft-based business solutions and focuses on leading and emerging technology to create cost effective solutions that exceed customers' needs and expectations.

**TEAMOLOGIES:** *n.* the science of teamwork, technology, art, career and skill combined to achieve a practical purpose